

**SONNENKRAFTWERK**

The powerful solar power module for floor, roof and facade mounting

**GENERATE POWER  
YOURSELF?  
EVERYONE CAN!**

**600 Wp**  
Plug & Play Set from  
**€ 1.100,-**

**SONNENKRAFT**

Photovoltaic module  
**SONNENKRAFTWERK**



**Floor mounting set** for horizontal mounting 25°  
incl. backrails **Art. Nr. 2413**



**Facade mounting set**  
incl. backrails **Art. Nr. 2412**



**Standard roof mounting set**  
for PV systems

## From your installer!

The super-strong solar power module  
SONNENKRAFTWERK has many advantages:

### **NEW** Integrated inverter

Each module has a micro inverter and thus already supplies alternating current. The effort for cabling and wiring that conventional photovoltaic systems have is not necessary.

### Easy and flexible mounting

There are different possibilities for mounting our SONNENKRAFTWERK. Whether if you install it on the floor, on a terrace or on the flat roof - the floor mounting set is easy to install. The standard photovoltaic mounting can be used for mounting on pitched roofs. Thanks to the included backrails, the SONNENKRAFTWERK can also be mounted on the facade.

### Quality Made in Austria

We use only tested, high-quality materials for our SONNENKRAFTWERK. The special aluminum frame ensures exceptional stability and mounting flexibility.

### More yield

Each module works independently thanks to the integrated inverter: In case of failure or shading of individual modules, every module works on its own. This prevents a worse efficiency or the total failure of the system. If the public power grid is switched off or fails, power supply is stopped fully automatically within seconds. Another advantage: the modules can be aligned variably.



IT'S  
SO  
EASY.



# WHICH SYSTEM FITS YOUR NEEDS?

Free power, now even without large roof areas, easy to install and highly efficient.

## House installation up to 14 modules per string

Yield 14 modules: up to 4.200 kWh/year

**This corresponds to the average power requirement of a 4-person household**

- Connection of 14 modules connected in series
- Integration into the home network via AC cabling with the control cabinet
- No external inverter necessary

**UP TO 14 MODULES**  
for single-family-houses  
with roof mounting

### CALCULATION EXAMPLE

**14 SONNENKRAFTWERK modules 4,2 kWp**  
incl. roof mounting, inverter

Price incl. VAT	€ 5.900,-
Power savings / year 70% own consumption	€ 750,-
Payback period	8 years

## Small installation up to 6 modules

Yield 6 modules: up to 1.800 kWh/year

**This corresponds to the average power requirement of a 2-person household**

- Connection of 6 modules connected in series
- Integration into the home network via AC cabling with the control cabinet
- High self-consumption rate improves system efficiency

**THE ONLY PV SYSTEM  
ON THE MARKET**  
which works properly also  
with 6 modules

### CALCULATION EXAMPLE

**6 SONNENKRAFTWERK modules 1,8 kWp**  
incl. roof mounting, inverter

Price incl. VAT	€ 2.500,-
Power savings / year 70% own consumption	€ 450,-
Payback period	5,5 years

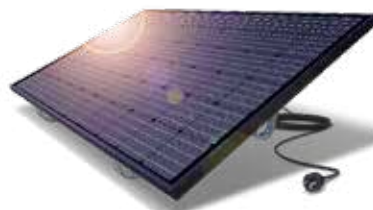
## Plug & Play up to 2 modules

Yield 2 modules: up to 600 kWh/year

**This corresponds to the average power consumption of a refrigerator + washing machine**

- Connection of 1 - 2 modules directly to the socket
- For easy access of systems up to 600 Wp (Austria)
- No large roof areas necessary

**PLUG-IN  
READY!**



### CALCULATION EXAMPLE

**2 SONNENKRAFTWERK modules 600 Wp**  
incl. floor mounting, inverter

Price incl. VAT	€ 1.100,-
Power savings / year	€ 160,-
Payback period	6,5 years

## Functional principle

The electricity produced is fed directly from the SONNENKRAFTWERK modules into the home grid via socket: The modules generate direct current (DC), which is converted into alternating current (AC) via integrated micro-inverter. Since electric power uses the shortest route, the electricity flows directly into the electrical appliances that are being used via the socket. Electricity that is not needed is fed into the electricity network of the electricity supplier and remunerated.

## Technical Data



PV Module SONNENKRAFTWERK	
Length (L)	1668 mm
Width (B)	994 mm
Height (H) incl. alu frame	40 mm
Weight	25 kg
Cable length	300 mm
Power	300 Wp

Inverter certificates:  
DIN V VDE V 01261-1, DIN V VDE V 01261-1/A1,  
VDE-ARN4105: 2012-08, DIN VDE V 0124-100,  
EN G2109-1: 2010, EN62109-2: 2011, EN 6100-6,  
EN 50438:2013

**Ask your installer for the new photovoltaic module SONNENKRAFTWERK:**

Your SONNENKRAFT partner:

**From now on, you no longer need to be a solar professional to install your own photovoltaic system.**

The new plug-and-play system allows easy installation without expensive installation and wiring. The generation of green electricity has never been so easy.

